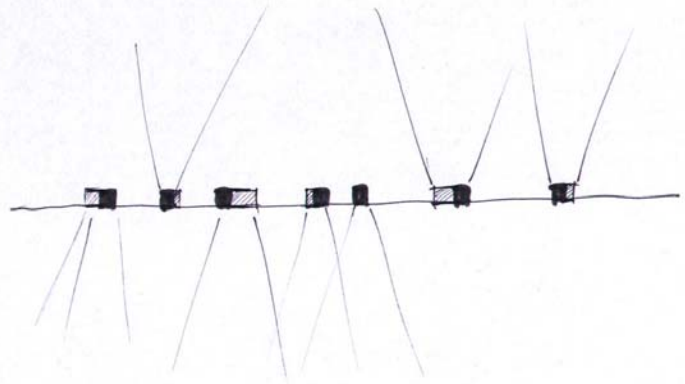
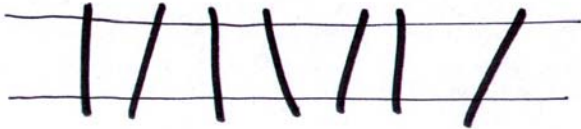
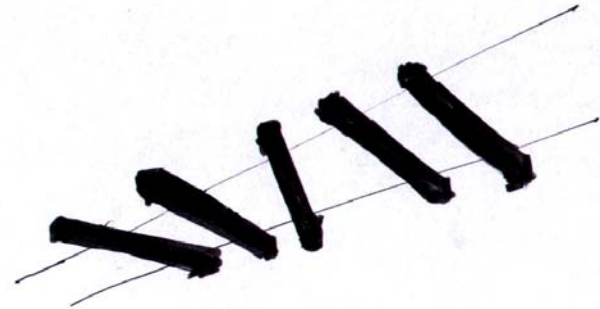
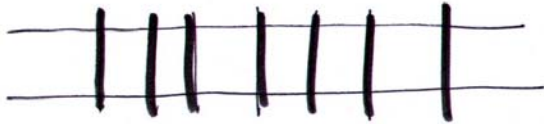


Entwurf einer LED-Hängeleuchte

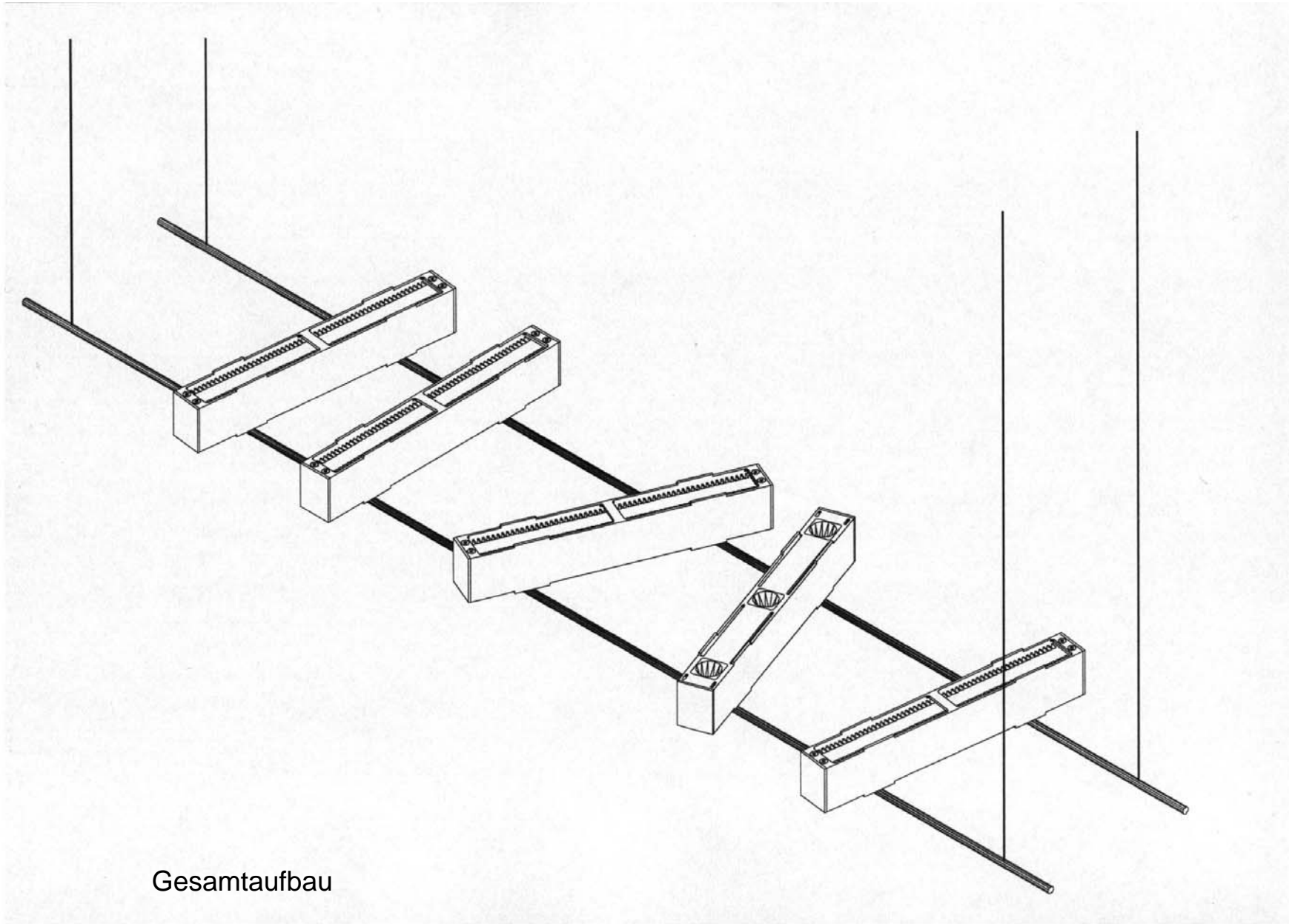
für Verkaufs- und Empfangsbereiche

Design Frank Rohrer

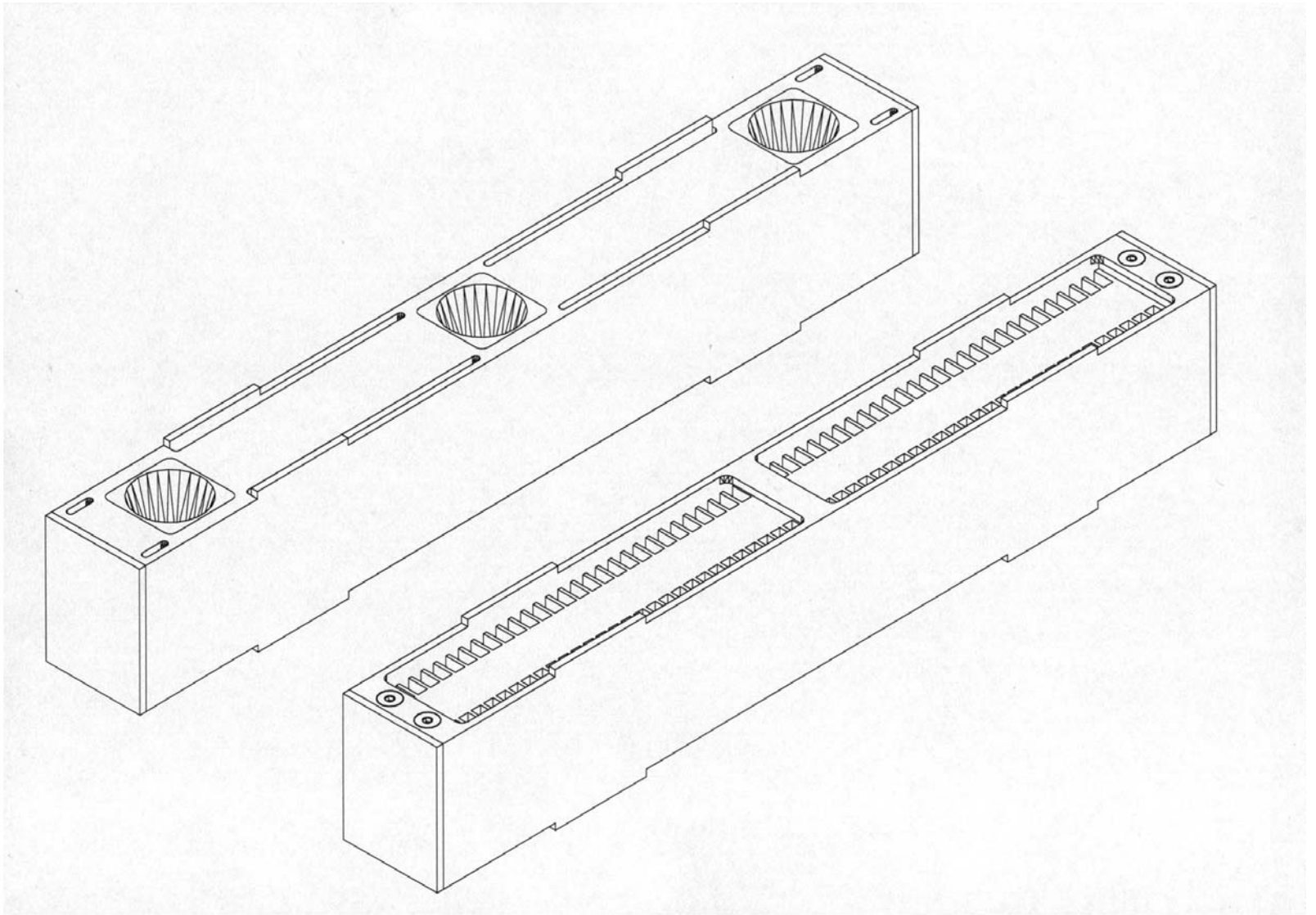
Techn. Leitung Karsten Klinger



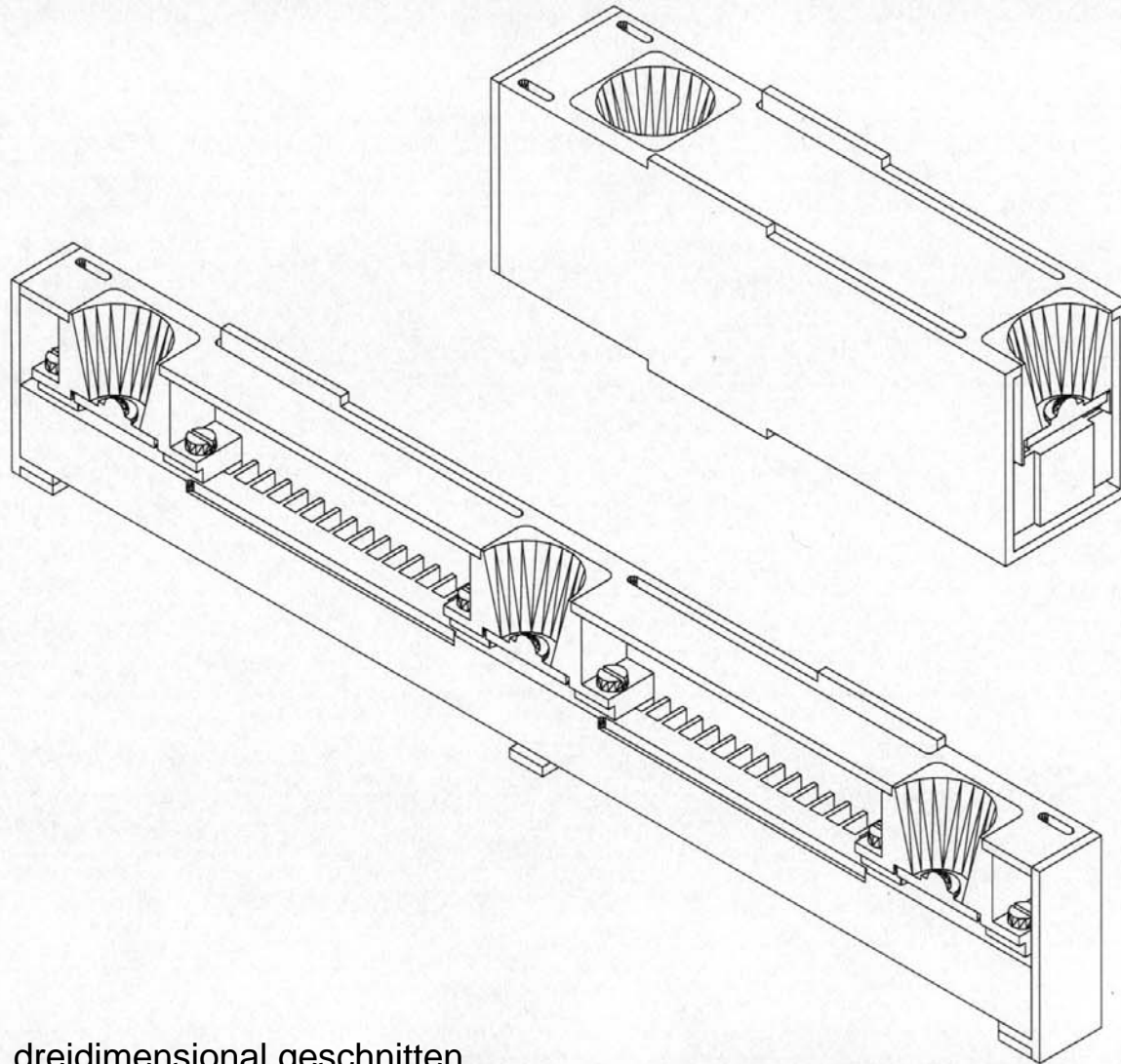
Ideenskizzen



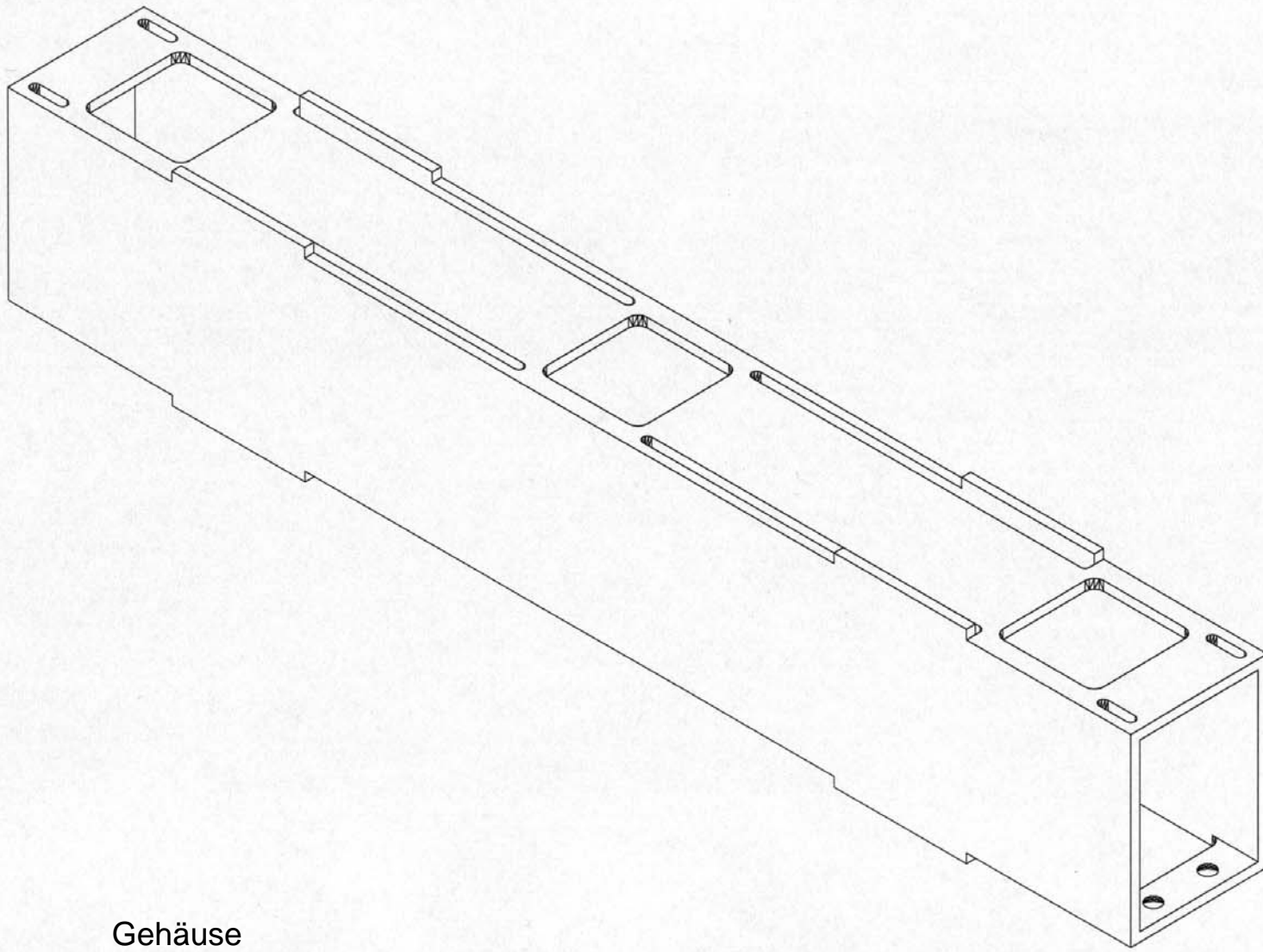
Gesamtaufbau



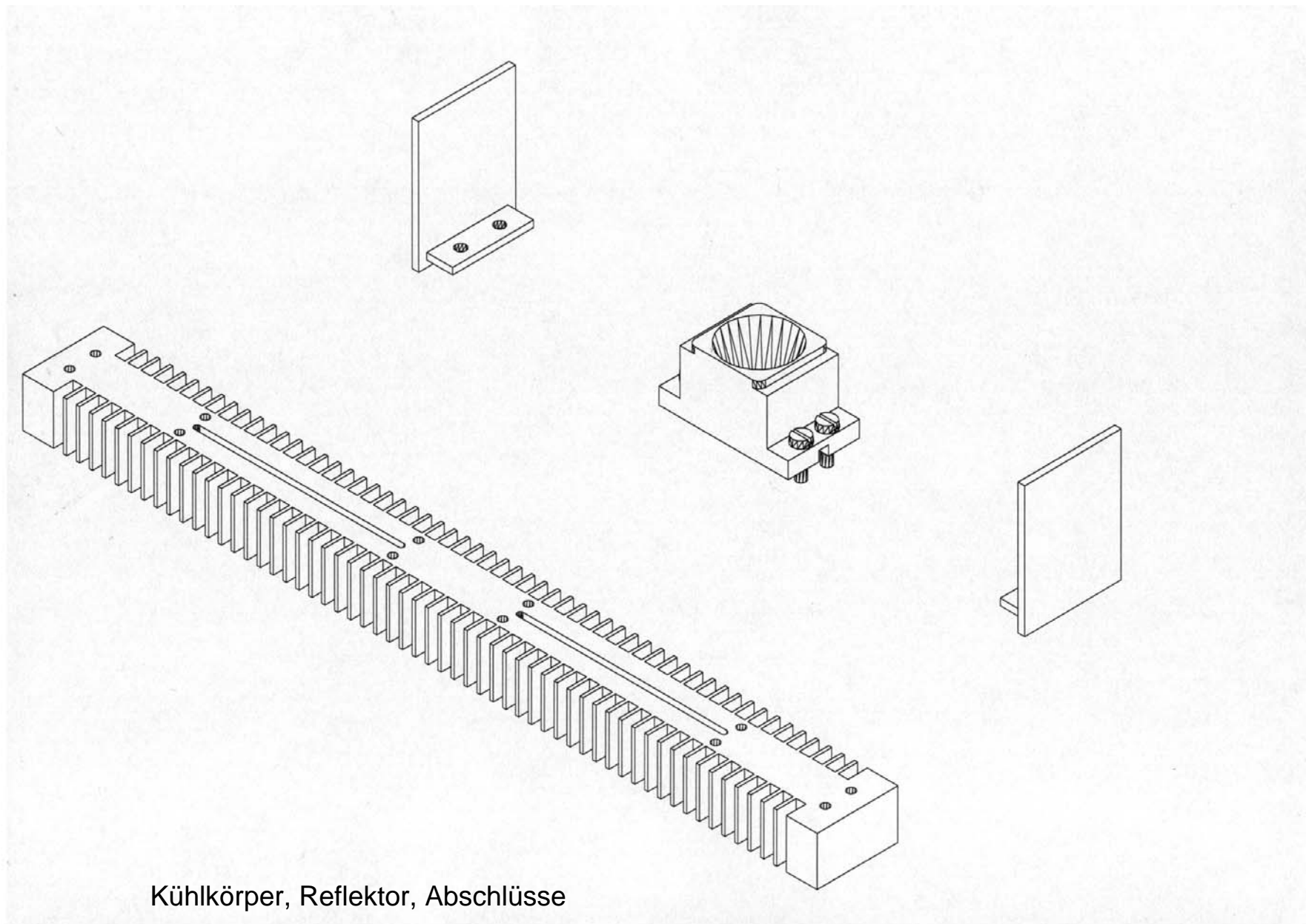
Axonometrien



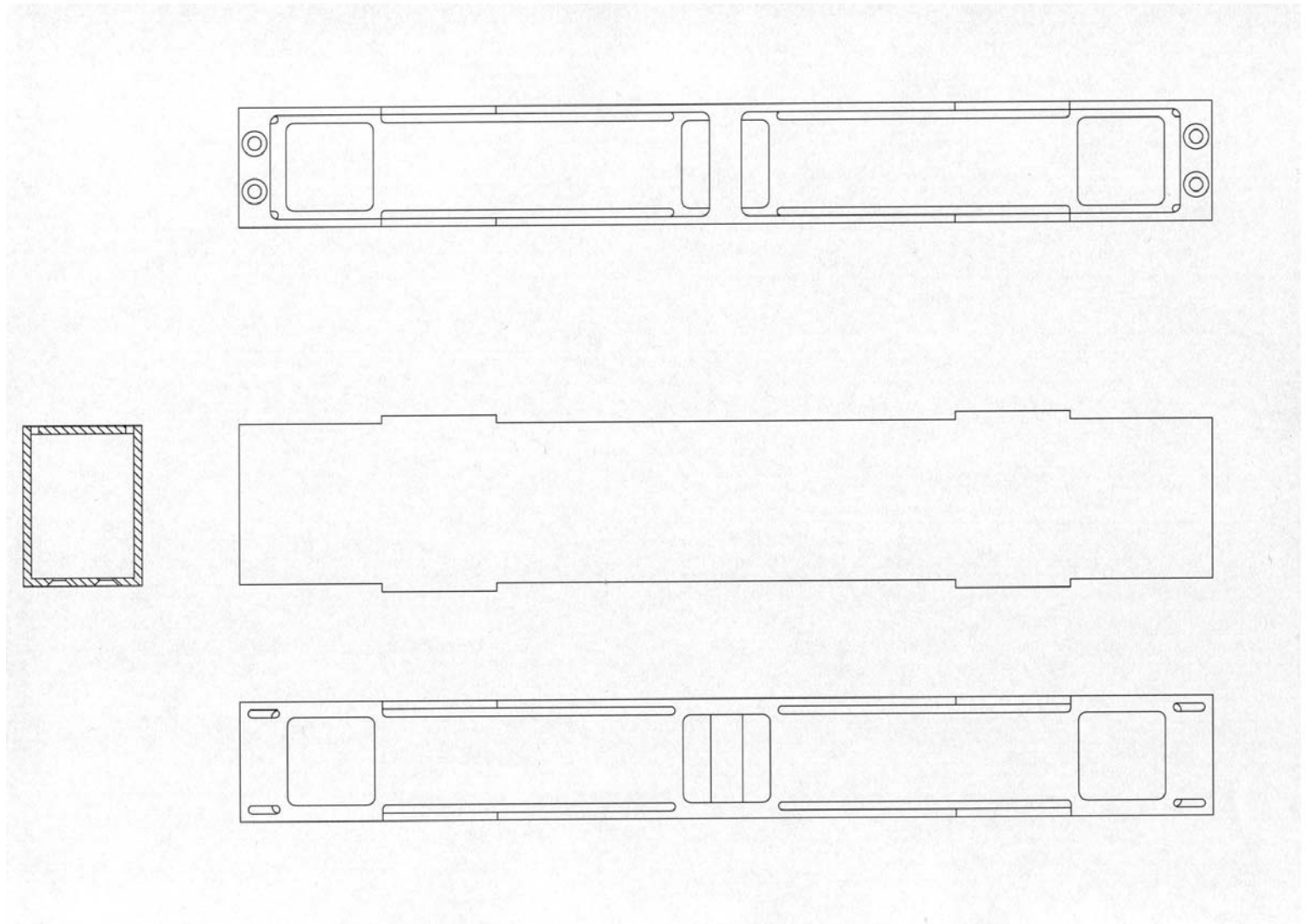
dreidimensional geschnitten



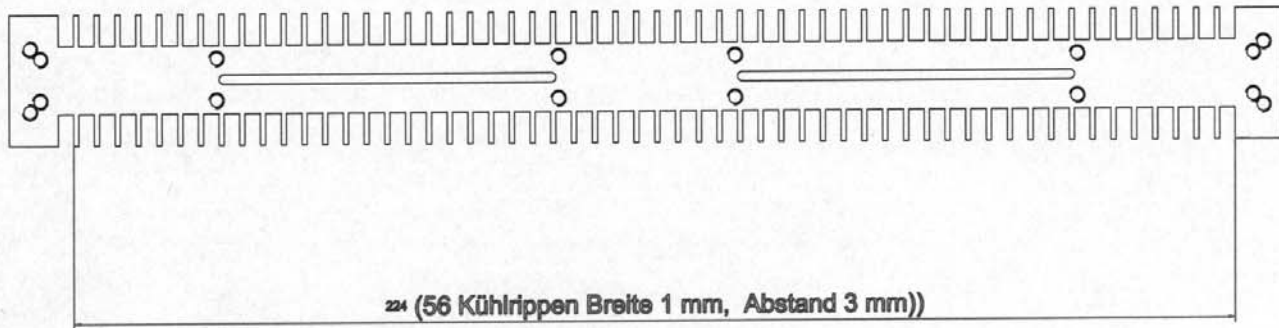
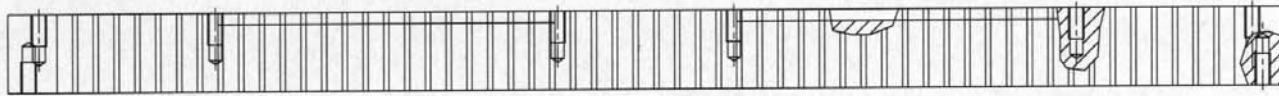
Gehäuse



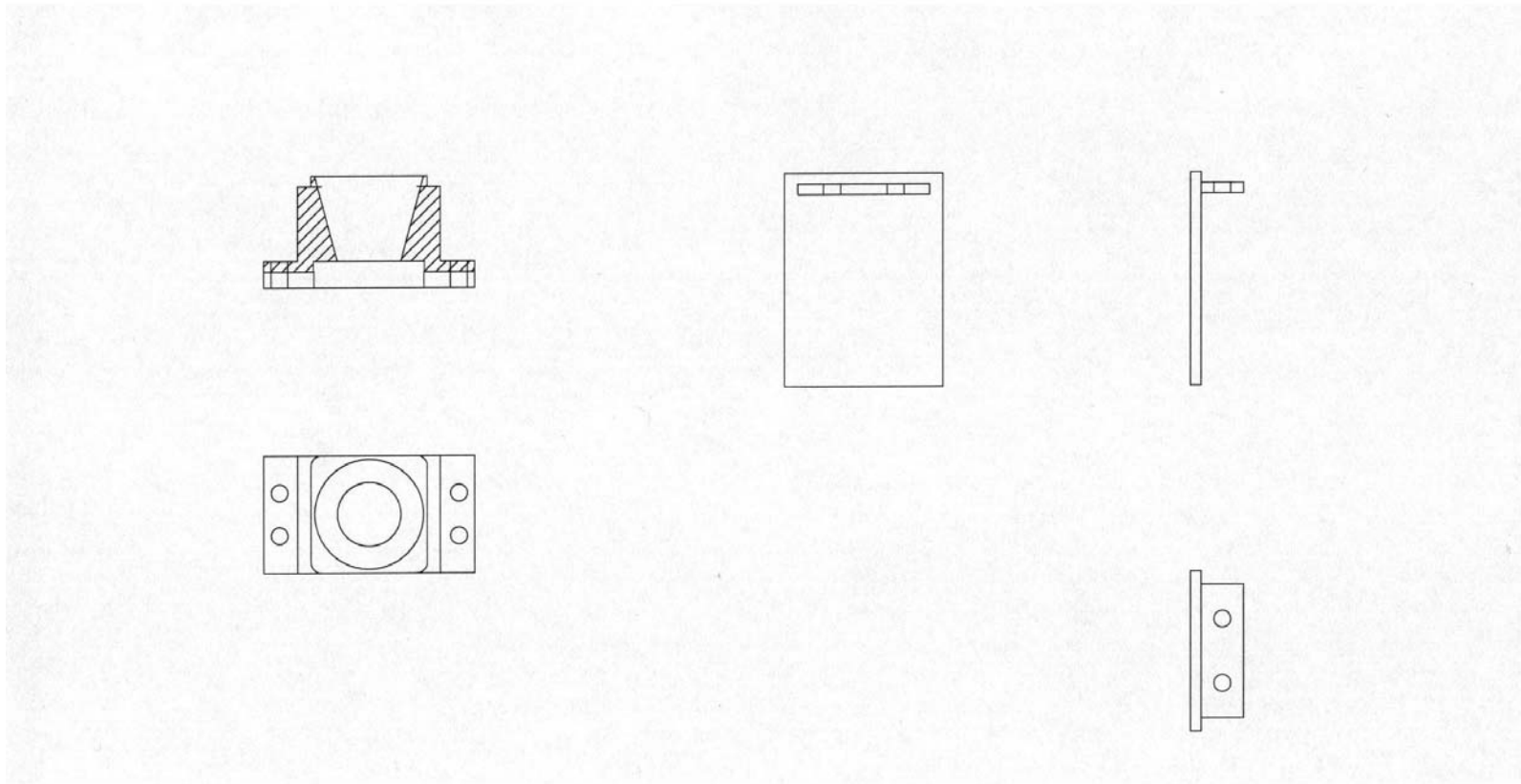
Kühlkörper, Reflektor, Abschlüsse



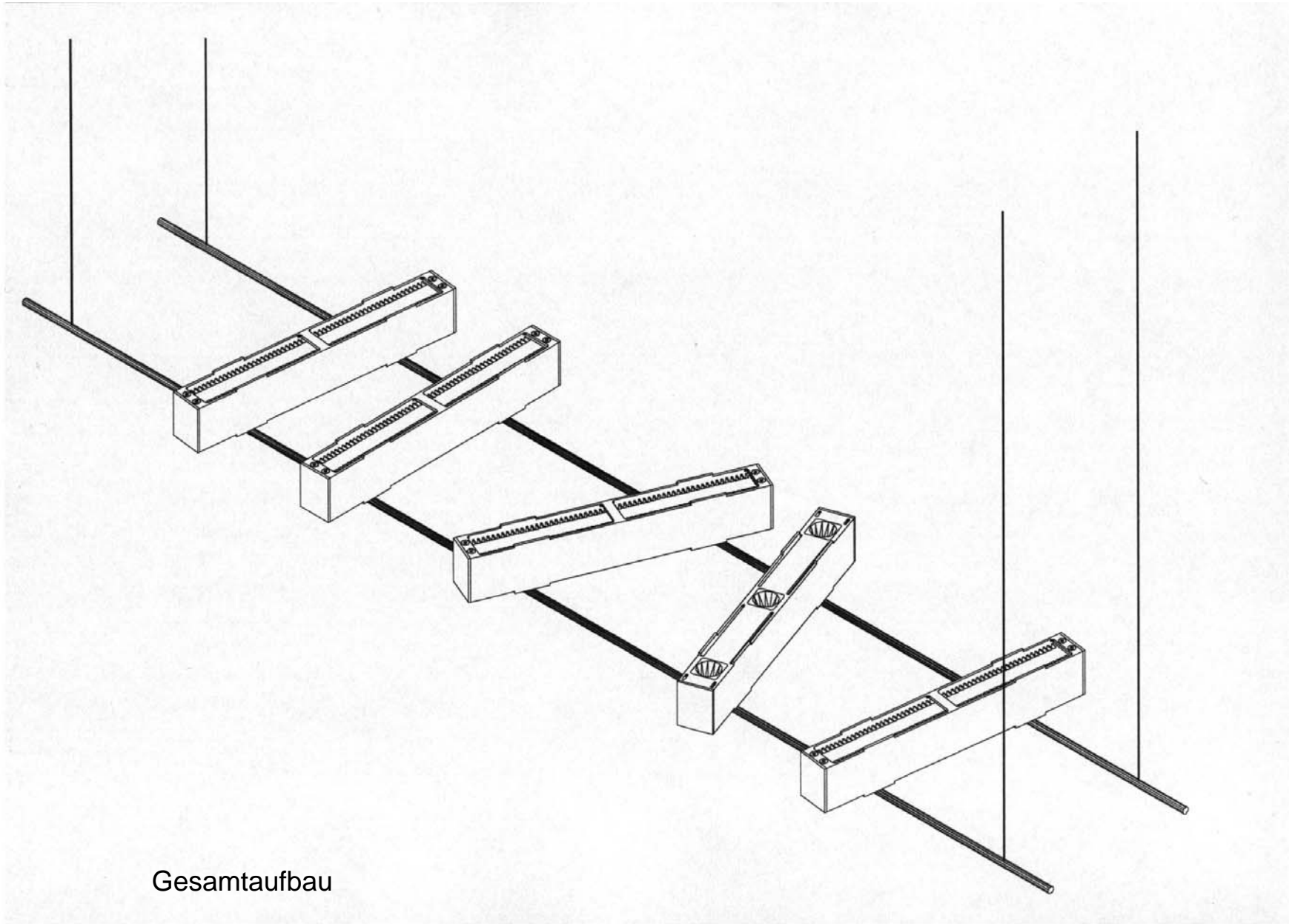
Ansichten Gehäuse



Ansichten Kühlkörper



Ansicht und Schnitt Reflektor, Abschluss



Gesamtaufbau